

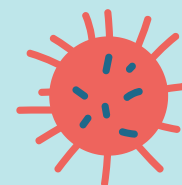
# COVID-19

## TESTING LOCATIONS

### IN SOUTHWEST NEBRASKA

#### Contact your healthcare provider

for their instructions on testing for COVID-19  
or sign up with one of the following locations:



#### Mark's Pharmacy

PCR and Rapid tests

- Cambridge
- 308-697-3400

Visit [marksrx.com](https://marksrx.com)

#### Dr. Deb's Express Medical Care

PCR and Rapid Tests

- North Platte
- 308-221-6065

Visit [drdebsurgentcare.com](https://drdebsurgentcare.com)

#### Walgreens Pharmacy

PCR and Rapid tests, with drive thru  
testing options.

- North Platte
- Kearney
- Hastings
- Grand Island
- Hays, KS

Visit [Walgreens.com](https://Walgreens.com)

#### CVS Pharmacy

PCR and Rapid tests

- Kearney (inside of Target)
- 308-237-2002

Visit [CVS.com](https://CVS.com)

#### Nebraska Covid-19 Information Line

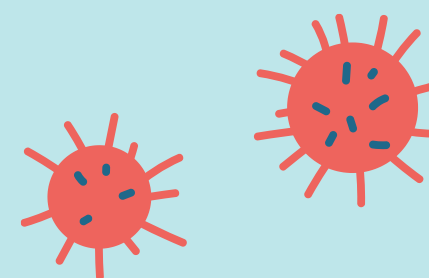
Where to find testing in Nebraska

- Every day from 8am-8pm
- 833-998-2275

#### COVIDTest.gov

Order up to four at-home test kits per household

- For all US residential addresses
- Free
- Usually ship in 7 to 12 days. Order ahead of time.



**Southwest Nebraska Public Health Department**  
**[swhealth.ne.gov](https://swhealth.ne.gov)**